

Distributed by :

**DATALINK**  
Systems & Technologies  
Montpellier-France [www.datalink.fr](http://www.datalink.fr)

## VO<sub>2000</sub> Portable Metabolic System

The MedGraphics VO<sub>2000</sub> Portable Metabolic Testing System provides the most versatile, comfortable, easy-to-use, accurate and affordable metabolic testing available. Take your VO<sub>2</sub> testing in the laboratory or in the field to a higher level.



The remarkable MedGraphics VO<sub>2000</sub> system weighs in at only 740 grams.

### **Versatile**

The MedGraphics VO<sub>2000</sub> will meet the needs of the research center, sports medicine clinic, sports team, nutritionist, rehab facility, athletic club and classroom. The VO<sub>2000</sub> stores data in on-board memory for later download, works remotely with continuous data feed from the telemetry option, or operates connected to a PC.

### **Comfortable**

The compact, lightweight design may be worn with a contoured athletic belt or three point harness. The patented preVent mask is form fitting, comfortable and significantly lighter than standard masks.

### **Easy-To-Use**

The small size makes this highly portable and with the quick connect, setup is a snap. The VO<sub>2000</sub> uses a patented, hands-free Auto-calibration. No calibration syringes or gases are required.

### **Accurate**

Patented sampling techniques and enhanced gas analysis provide highly accurate and reliable metabolic measurements under a variety of testing conditions.

### **Affordable**

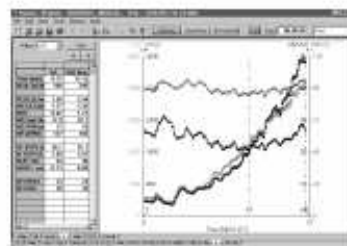
The VO<sub>2000</sub> is one of the most affordable metabolic systems available. It comes complete with all the accessories you need to start testing.

### **BreezeSuite Software**

The BREEZESUITE software runs on Windows 2000/XP Professional PC's and requires no additional hardware components. Results can be printed on a standard PC compatible printer. Configurable screens and graphs offer powerful assessment tools. Important markers such as anaerobic threshold can be automatically detected, even from a submaximal test!



In-field use of the VO<sub>2000</sub> with optional real-time telemetry.



## Specifications:

### Innovative Technology

- ◆ Unique, hands-free AutoCal System requires no calibration syringe or gases.
- ◆ Patented Electronic Variable Sampling provides continuous sample flow and insensitivity to pressure and temperature artifacts.
- ◆ Patented preVent™ Pneumotach and preVent™ Mask provide accuracy and comfort without bulky connections and headgear and is insensitive to turbulence.
- ◆ Optional Telemetry system allows you to measure the true metabolic response of physical activity under "real world" conditions.

**Weight:** 740 grams (1.63 lbs.)

### Dimensions:

- ◆ Width: 10.5 cm (4.25")
- ◆ Depth: 14 cm (5.5")
- ◆ Height: 5 cm (2")

### Operation:

- ◆ Mean Sample Flow: 50cc/min
- ◆ Peak Sampling Rate: 150 Hz
- ◆ Auto Cal/Zero Time: Typically <55 seconds

### Volume Measurement:

- ◆ preVent Pneumotach
- ◆ Bi-directional Pitot Tube
- ◆ Low Flow Range: 2-30 L/Min
- ◆ Exercise Range: 20-200+ L/Min
- ◆ Accuracy: ± 3% of Absolute Volume

### O2 Analyzer:

- ◆ Type: Galvanic Fuel Cell
- ◆ Range: 0-96%
- ◆ Accuracy: ±0.1%

### CO2 Analyzer:

- ◆ Type: Non-Dispersive Infrared
- ◆ Range: 0-10%

### Data Acquisition and Storage:

- ◆ Data is transmitted between each breath interval. Data storage is in breath rate or time based packets, at the user's option.
- ◆ Breath-Rate Data: 3, 6 or 9 breaths
- ◆ Time Data: 10, 20, 30, 40, 50 or 60 seconds

### Telemetry Receiver:

- ◆ Type: Bi-directional 2.4 GHz digital spread spectrum
- ◆ Interface: RS232

### Heart Rate Measurement:

- ◆ 5 volt logic TTL input & Polar CIC Interface

### System Response:

- ◆ < 9 sec
- ◆ 3 breath average

**Power Requirements:** 12V DC @ 650mA (Peak)

### Environmental Specifications:

- ◆ Operating Range: 0-35°C
- ◆ Humidity Range: 0-98% non-condensing
- ◆ Sample Condition: Dry to Saturated

### Software Features:

- ◆ Report Designer
- ◆ Script Designer
- ◆ Multi-User (optional)
- ◆ Query Database (optional)
- ◆ ExerScript™ (optional)
- ◆ Exercise Consult™ (optional)
- ◆ User Defined Predicteds
- ◆ HIPAA Security



Distributed by



Montpellier-France [www.datalink.fr](http://www.datalink.fr)